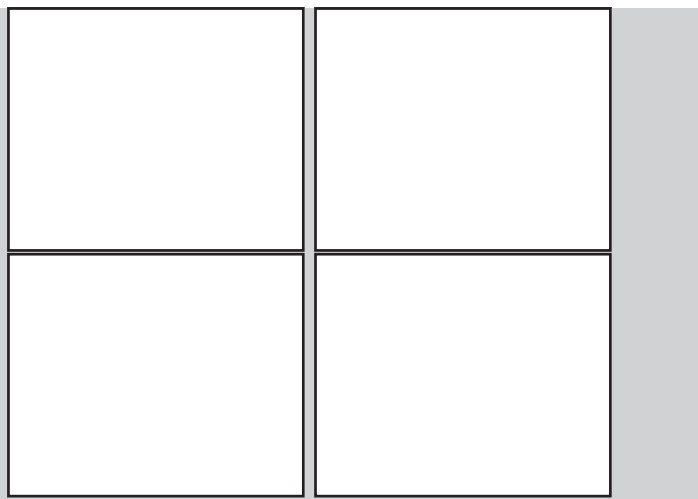


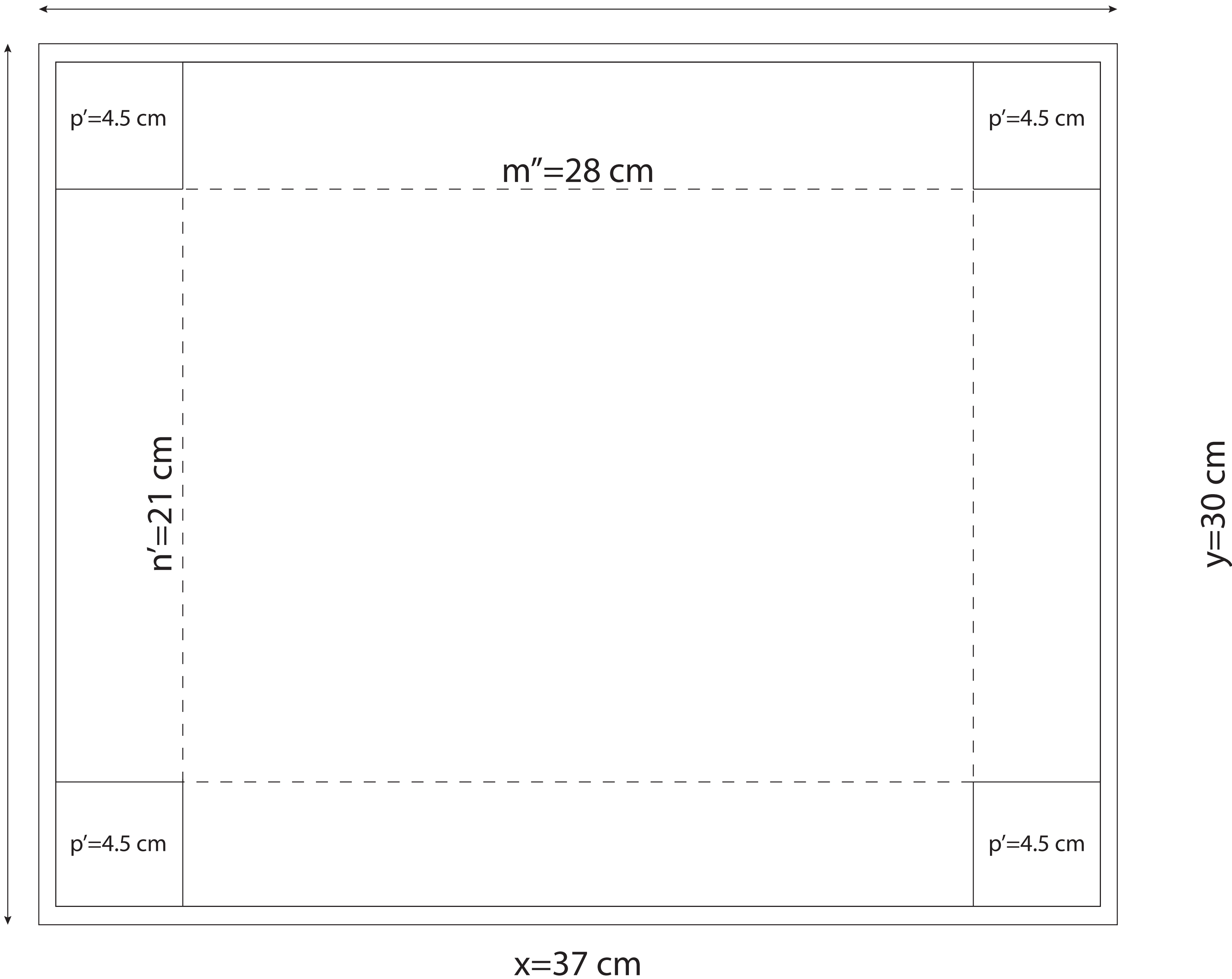
Cartón Cajón

- Carton gris #4 de 93x130 cortado 1/2 de 65x93 cm
- 4 hojas
1. cortar a (x'=38.2) x (y'=31.2) cm para empalme
2. cortar a (x=37)x (y=30) para ranurar
- 20 pzas
- 8 extras
- 28 total



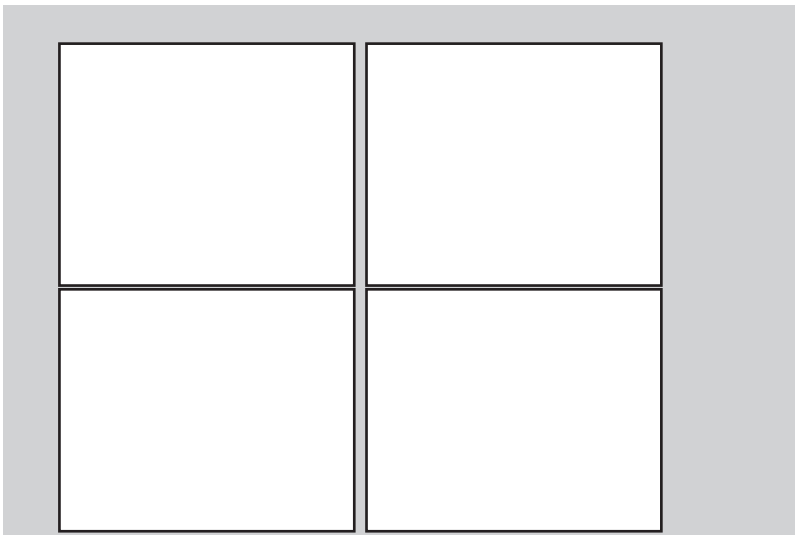
Medida interna

- base (m')=27.6
- alto (n')=20.6
- Profundidad (p'/2)=4.3

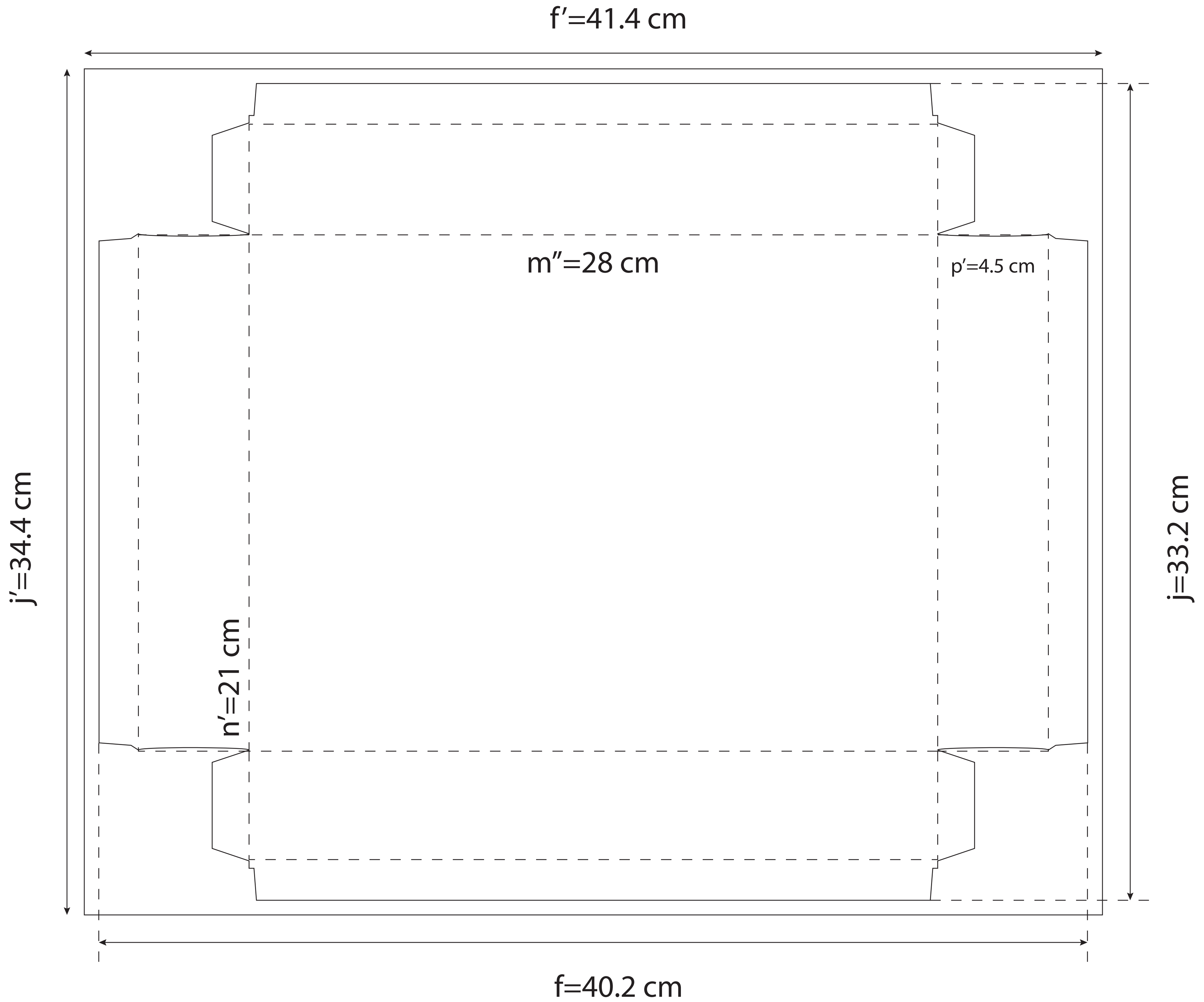
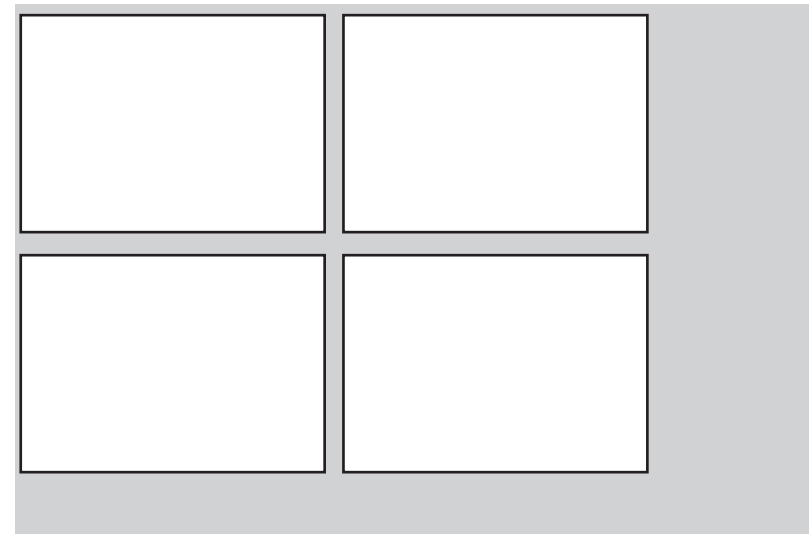


Empalme del Cajón

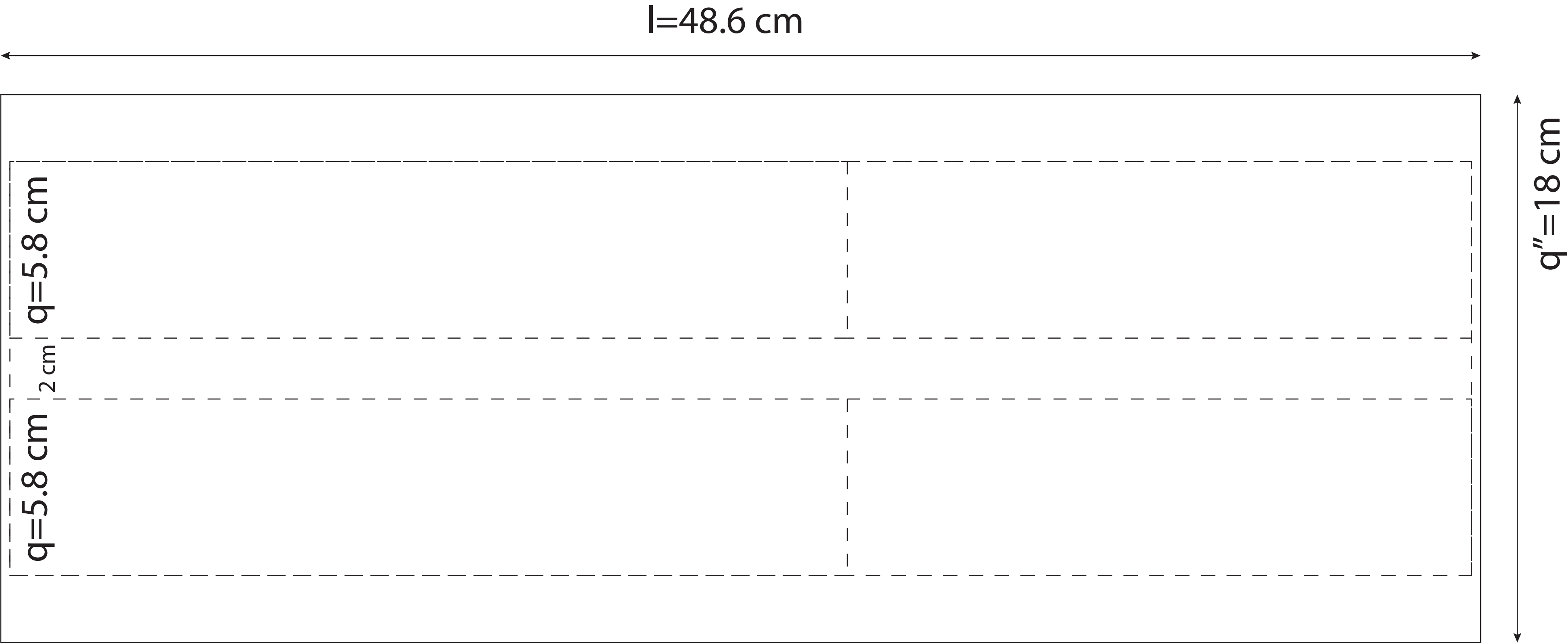
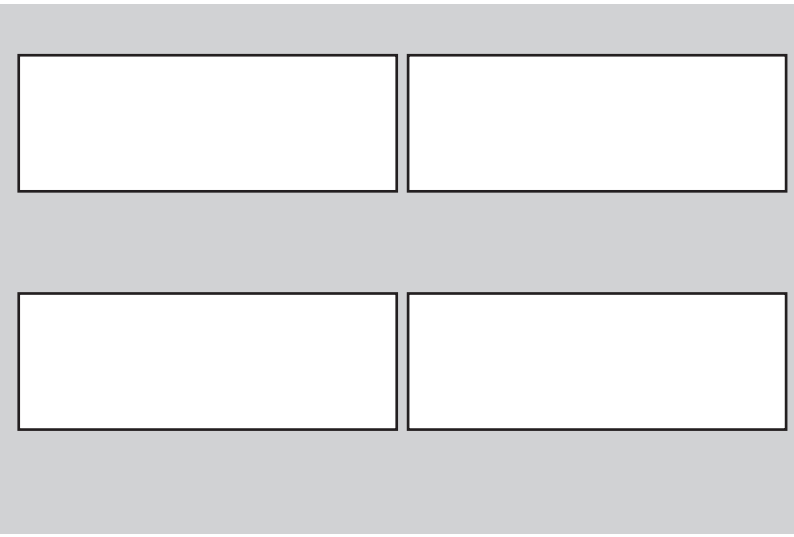
- P. Geltex Negro 118 grs de 70x105 cm
- 7 hojas
1. cortar a 31.8 x 38.8 cm para empalme
- 20 pzas
- 8 extras
- 28 total



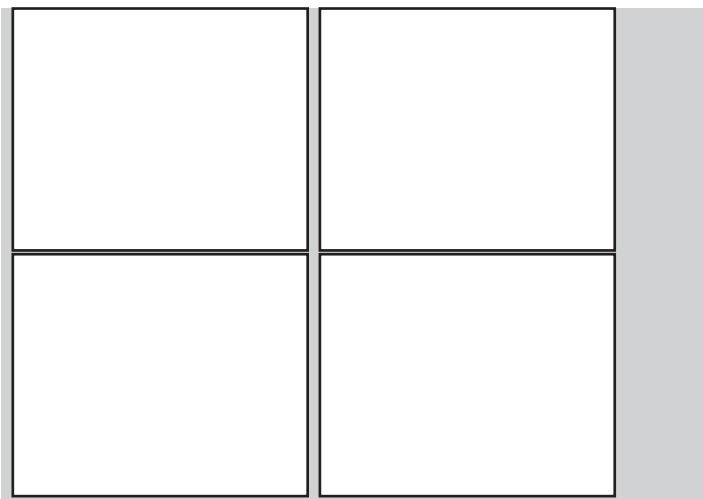
Forro del Cajón  
P. Geltex Negro 118 grs de 70x105 cm  
7 hojas  
1. cortar a  $j'=34.4$  x  $f'=41.2$  cm para suajar  
2. suajado  $j=33.2$  x  $f=40.2$  cm  
20 pzas  
8 extras  
28 total



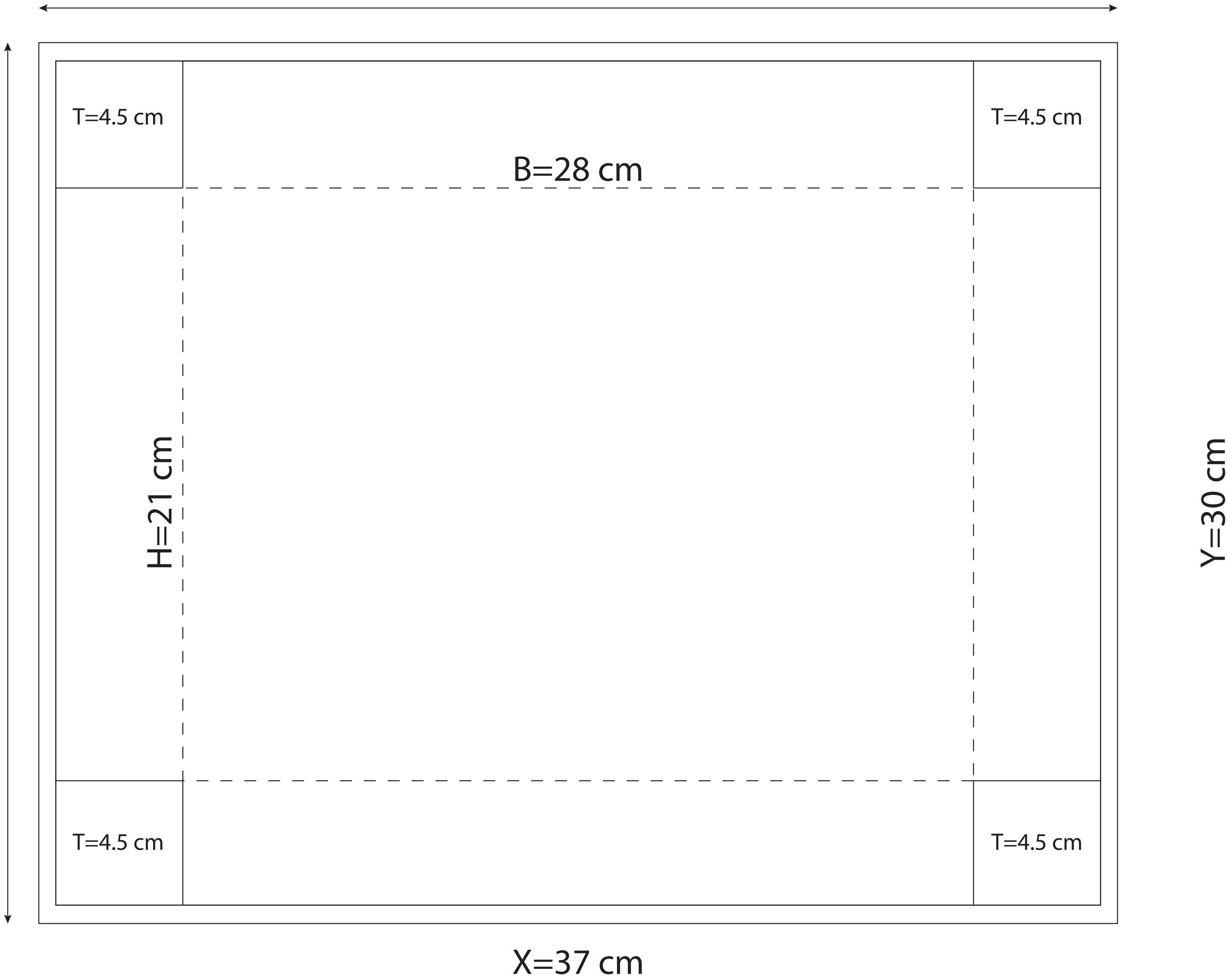
Forro de Marco Interno  
P. Geltex Negro 118 grs de 70x105 cm  
7 hojas  
1. cortar a q''=18 x l=48.6 cm  
20 pzas  
8 extras  
28 total



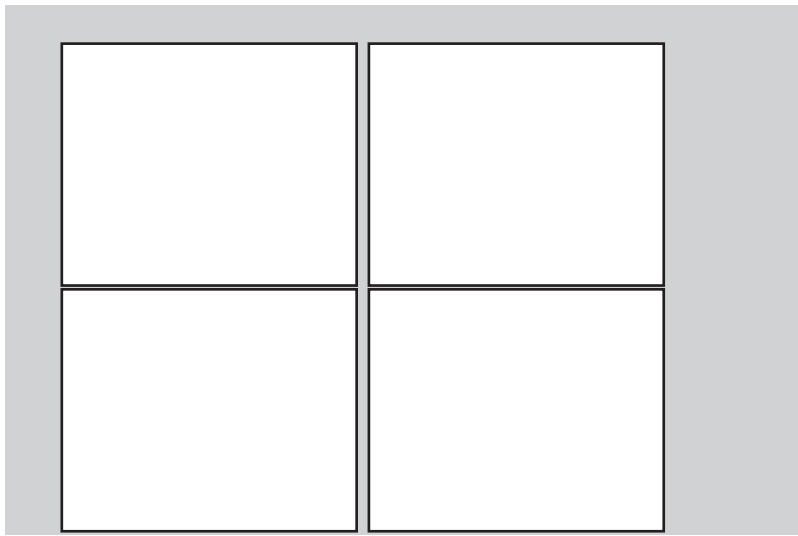
Cartón Tapa  
Carton gris #4 de 93x130 cortado 1/2 de 65x93 cm  
4 hojas  
1. cortar a (Y'=31.2) x (X'=38.2) cm para empalme  
2. cortar a (Y=30)x(X=37) para ranurar  
20 pzas  
8 extras  
28 total



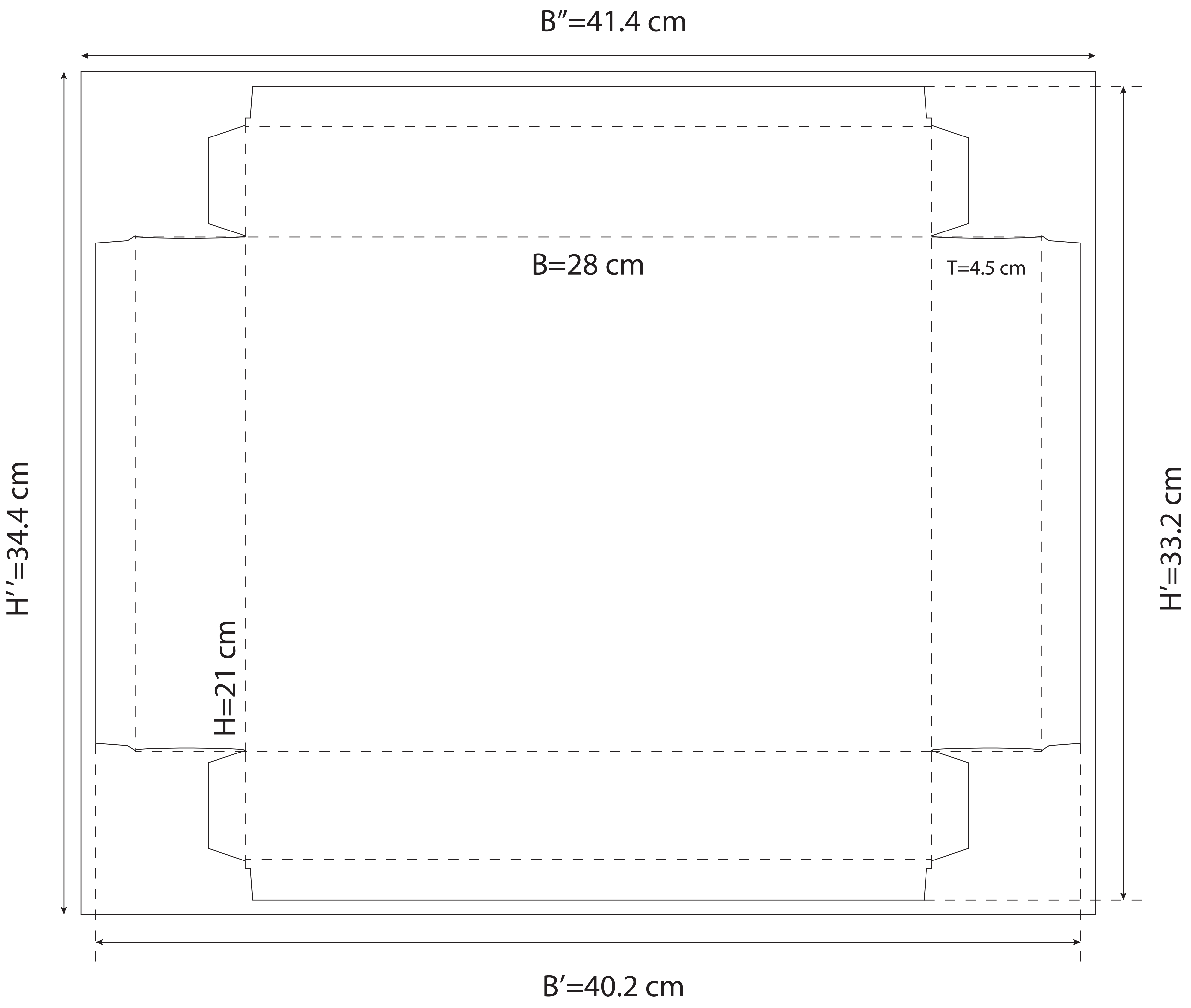
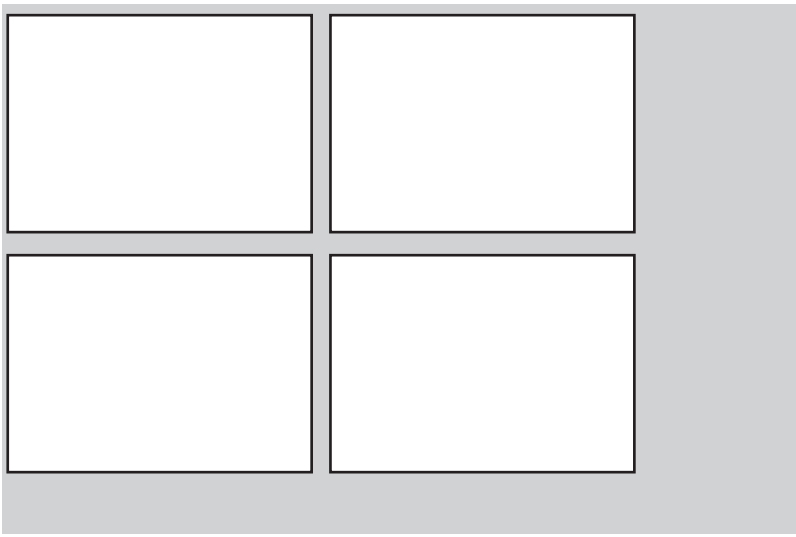
Medida interna  
base (m')=27.6  
alto (n')=20.6  
Profundidad (p/2)=4.3



Empalme del tapa  
P. Geltex Negro 118 grs de 70x105 cm  
7 hojas  
1. cortar a (Y''=31.8) x (X''=38.8) cm para empalme  
20 pzas  
8 extras  
28 total



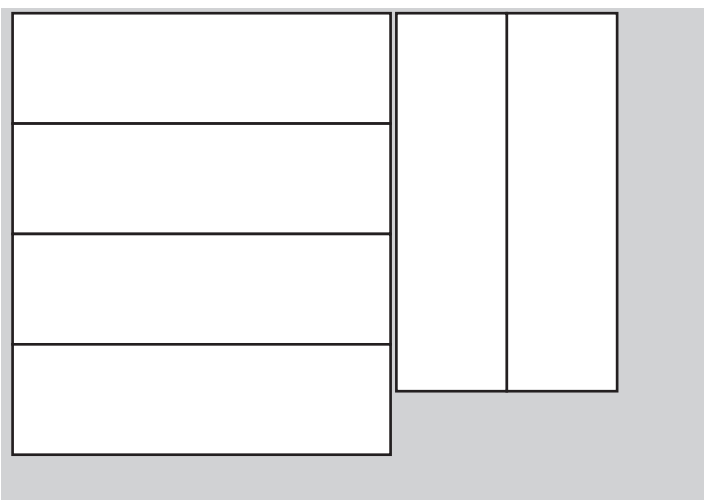
Forro del Tapa  
P. Geltex Negro 118 grs de 70x105 cm  
7 hojas  
1. cortar a (H''=34.4) x (B''=41.2) cm para suajar  
2. suajado (H'=33.2) x (B'=40.2) cm  
20 pzas  
8 extras  
28 total



Cartón para Marco Interno

Carton gris #4 de 93x130 cortado 1/2 de 65x93 cm  
5 hojas

- 1. cortar a q'=13.6 x l=48.6 cm para forrar y ranurado
  - 2. cortar a q=5.8 x L"48 final forrado
- 40 pzas  
16 extras  
56 total



Medida interna  
base (b)=27.1  
alto (h)=20.1  
Profundidad (p)=8.6  
Grosor de Cartón=#4  
Espesor de Cartón=.2

